

USER MANUAL



DRIVE BOOSTER

Module

>>> CONTENT OF USER MANUAL <<<

Content of delivery	2
Product features	3
General installation notes	4
Installation principle	5
Fine tuning	6
Troubleshooting	7
Warranty and Disclaimer of liability	8

>>> CONTENT OF DELIVERY <<<

- Drive Booster tuning module
- Cable harness
- Cable ties
- Holder
- User Manual



>>> PRODUCT FEATURES <<<

Dear Customer, our product has the following features:

**Made in Germany**

We invest in the future and development. Every day we work to improve the quality of our products, which proves our DEKRA Certification ISO9001-2015.

**Plug & Drive**

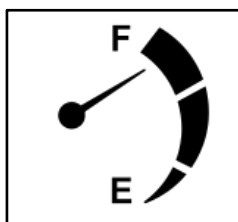
Easy and quick Plug & Drive, without additional technical knowledge.

**Driving With Pleasure**

With Drive Booster Throttle Module you'll get more dynamics which means more fun!

**Better Acceleration**

Up to 10% better acceleration of the vehicle.

**Fuel Saving**

You can reduce fuel consumption up to 10% depending on your driving habits.

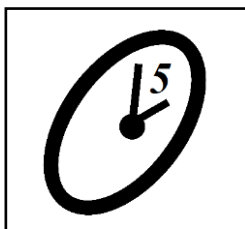
>>> GENERAL INSTALLATION NOTES <<<

Only by exact following the notes you will be able to install the Drive Booster correctly on your vehicle and enjoy the full advantages of our system.

Please read the notes throughout and be sure that you understood each step before actual installation takes place.

Please follow the next steps:

1) Turn off the engine and remove the ignition key.



2) Wait for 5 minutes for all electrical devices to stop working.



3) Install the equipment in passenger compartment under dry conditions.



4) High temperature from heat sources can significantly reduce the life span of electronic components. Therefore, never install the module near parts which produces heat.



5) In order to keep the Tuning system functional please do not try to make any changes on Drive Booster (unless for fine tuning) or cable harness. Also please use the delivered cable ties to appropriate fix the cable harness away from moving and metal parts.

In case of equipment malfunction due to non-compliance to above mentioned general installation notes, the product warranty will be lost.

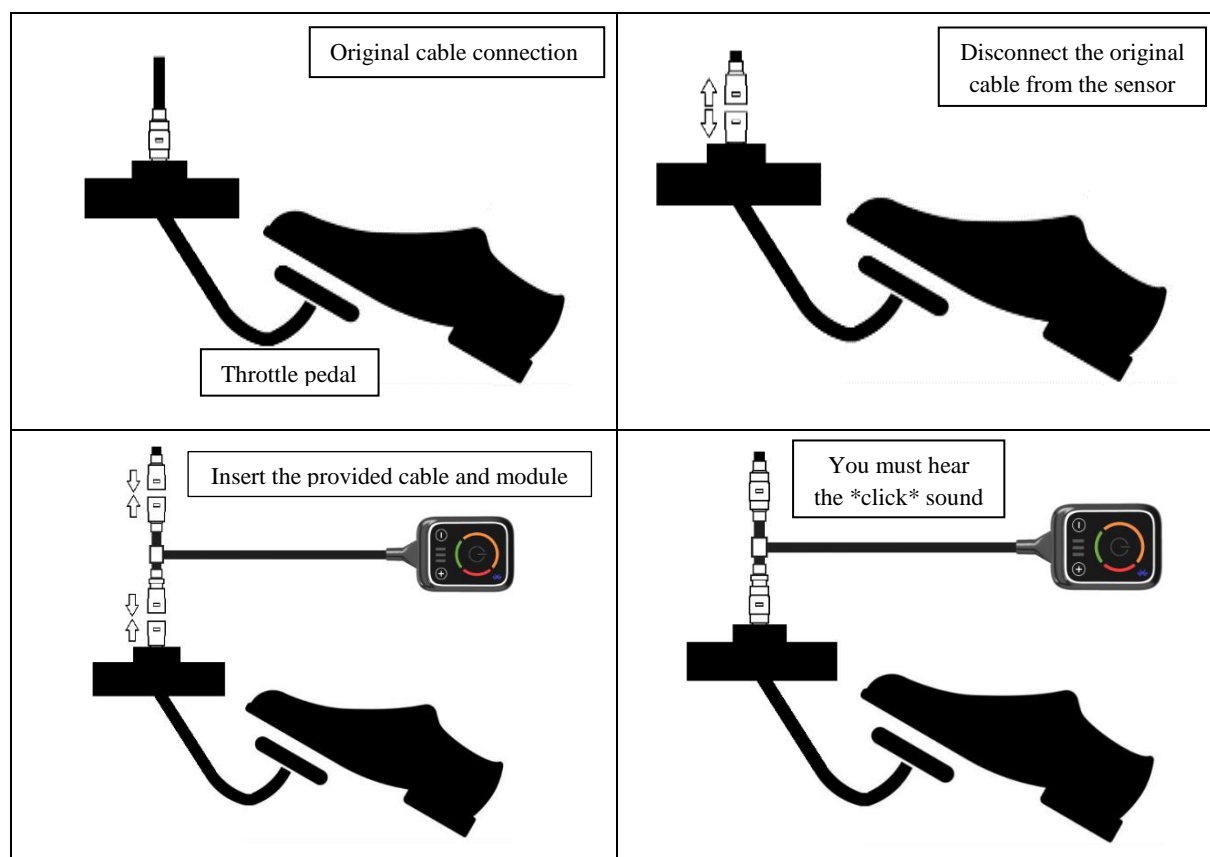
>>> INSTALLATION PRINCIPLE <<<

The Drive Booster Throttle Module will improve the response time of the accelerator pedal and you'll get an immediate response from the engine. In other words, Drive Booster Module eliminates throttle lag. It's not about more power, but rather that your engine will sooner realise the power it already has - without any delay!

Please do not open the Module nor expand or shorten the cable harness. The Tuning Module is pre-loaded with programs that enables you the maximum performance in terms of better acceleration.

CAUTION: DO NOT PLUG OR UNPLUG THE TUNING MODULE DURING ENGINE RUN.

Example of the connection diagram is shown on the picture below. You can find the throttle connector behind your throttle pedal, under the steering wheel. Make sure everything is fitted properly and that the tuning cable coming from the throttle pedal does not affect your driving.



If you need to remove the Module, please follow the installation preparation procedure: with turning the ignition key off, and removing the key from car lock. Afterwards you can disconnect the Module.

>>> PROGRAMS AND FINE TUNING FEATURES <<<

Drive Booster Tuning set has 3 main tuning programs and additional one standard program without tuning. You can choose the active program by pressing the middle power button. Bluetooth option is not yet available.

Following tuning programs are available:

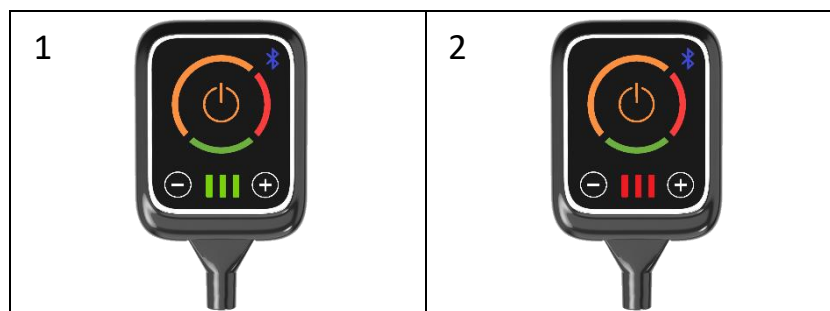


1. SPORT – **Orange middle LED** lit. Excellent acceleration in higher accelerator range for all ambitious drivers.
2. POWER – **Red middle LED** lit. Highest available acceleration for the car focused on middle accelerator range. This program gives you a quick start and fast acceleration.
3. ECO – **Green middle LED** lit. Enables better acceleration in low accelerator range. ECO mode for fuel saving in city driving conditions.
4. STANDARD – All LED's are OFF, and the tuning is reversed to standard manufacturer accelerator settings.

Fine Tuning description:

- Each of tuning programs has its fine setting in total of 7 levels.
- The active program can be fine tuned by pressing the - (minus) button and + (plus) button on the Drive Booster.
- The LED's will lit according to the chosen fine tuning level stage, 3 levels in upward and 3 levels in downward direction.
- When the neutral level is chosen no fine tuning LED's lit.

Example on the picture below is with Sport program fine tuned to -3 (picture 1) and +3 (picture 2).



>>> TROUBLESHOOTING <<<

Error description	Problem solution
Connector doesn't fit or needs a lot of force to fit.	<ul style="list-style-type: none"> ○ Compare the connector from the car and from the module, if they don't match, contact the Support.
The car emergency program starts and/or check engine light is lit.	<ul style="list-style-type: none"> ○ Check if the cable insertion is made correctly ○ In case you did not wait before disconnection the check engine lamp can be triggered. ○ Contact the Support for further assistance.
The car shows no extra performance.	<ul style="list-style-type: none"> ○ Increase the performance by choosing another program, or increase the fine tuning of the selected active program.
The response of the vehicle is too strong and the engine goes in too high RPMs.	<ul style="list-style-type: none"> ○ Decrease the performance by choosing another program, or decrease the fine tuning of the selected active program.
Slight acceleration after releasing the throttle pedal.	<ul style="list-style-type: none"> ○ Change the active program or decrease it with fine tuning options.
How can I get back on standard car settings?	<ul style="list-style-type: none"> ○ You can remove complete installation including the cable harness provided with the Tuning set. ○ Use the Standard program on the Drive Booster Tuning module.

Technical Support:
support@vector-tuning.com



>>> WARRANTY AND DISCLAIMER OF LIABILITY <<<

WARRANTY AND STATEMENT OF POLICY

Drive Booster comes with a two-year warranty. All Drive Boosters have been checked and tested. Nothing in this statement changes or extends the warranty terms, obligations or liabilities of these products. The manufacturer of Drive Booster is not responsible or liable for products damaged or destroyed due to improper installation.

WARRANTY CONDITIONS

Defective products must be prepared and returned to the Drive Booster manufacturer for further inspection, otherwise this warranty will be deemed null and void and will have no effect. This warranty is void for any product showing signs of misapplication, neglect, improper installation, abuse, lack of proper maintenance, or alteration from the original design. In no event will the Drive Booster manufacturer be liable for any consequential or incidental damages for breach of any express or implied warranty for the product. This warranty is not transferable or assignable. In the event buyer does not agree to this agreement, buyer may return this product, in new and unused condition, to the place of purchase with a dated receipt, immediately within 30 days of the date of purchase for a full refund. Installation of this product means that the buyer has read and understood this agreement and accepts its terms.

DISCLAIMER OF LIABILITY

Please read them carefully before installing Drive Booster. Use at your own risk. We are not responsible for any damage if the installed product causes problems. Do not use this product until you have carefully read the following agreement. This agreement sets out the terms of use for the Drive Booster. Installation of this product signifies that the buyer has read and fully understands this agreement and accepts its terms.

The Drive Booster manufacturer, its distributors or dealers are in no way responsible for the proper use and maintenance of the product. The buyer of this system hereby waives any liability claims. Buyer acknowledges that it will not rely on seller's ability or judgment to select or supply goods fit for a particular purpose and that there shall be no liability beyond what is described on front, and buyer hereby waives any remedy or liability, express or implied, whether statutory or otherwise (including without seller's obligations of fitness, merchantability and consequential damages) or whether or not caused by seller's negligence. The seller disclaims any warranty and expressly disclaims any liability for personal injury or damage to property. Buyer acknowledges and agrees that the exclusion of liability for personal injury is an essential form of this agreement and buyer agrees to indemnify and hold seller harmless from any and all claims related to the equipment purchased. Under no circumstances shall the seller be liable for any damage or expense incurred as a result of the use or sale of such equipment. Seller assumes no liability for improper installation or misapplication of its products. It is the installer's responsibility to verify proper installation and if in doubt to contact the manufacturer.

